
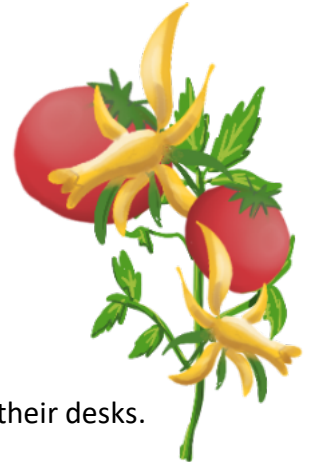


# The Wild and Weird Show

Objective: Students compare the life cycles of living organisms.

- Time for Lesson → **45 minutes**  
Standard → **Science - Orderly changes in diverse life cycle**  
Art integration → **Theatre Arts – Participate in roles in imaginative situations through narrative pantomime**  
Supplies → **Worksheet, Pencil**  
Video → [www.takethestage.tv](http://www.takethestage.tv)

 → Entire activity can be done from a seated position.



Pantomime: A performance using gestures and body movements without words.

## PREPARATION:

- Preview video. (*video is 10 minutes*)
- Test playback of video on smartboard or monitor before lesson.
- Print and pass out worksheet for each student from [www.takethestage.tv](http://www.takethestage.tv).
- Make sure there is enough room for each student to pantomime next to or from their desks.

## INTRODUCTION:

- 1) Explain to students, “You are now contestants on the Wild and Weird Game Show! You will compare and contrast the life cycles of living organisms by acting them out through pantomime!” (definition above)
- 2) Demonstrate pantomime to class: a flower growing, a bird flying, etc.
- 3) Define **life cycle** as “A set of orderly changes from birth to adult”. Explain: “Humans are in life cycles just like other animals and plants.”
- 4) Pass out the Wild and Weird Game Cards to class and instruct students to take out a pencil to use later.

## ACTIVITY:

- 1) Once each student has the Wild and Weird Game Card and is seated, **PRESS PLAY**.
- 2) When video instructs students to **ACT ALONG** with the actors in the video, instruct students to follow along with the video. Teacher participation in acting out the lifecycles is highly encouraged.
- 3) If needed, pause video to allow students enough time to act out each stage of the life cycle.
- 4) When the video says **PRESS PAUSE**, pause video for students to **complete** filling out their Game Cards.
- 5) Ask students to share their answers with the class, and then **UNPAUSE** to complete watching the video.

## REVIEW:

- 1) Ask students to identify which life cycle stage they are in right now.
- 2) Ask students to give examples of life cycle stages for other animals and plants.
- 3) Have students fill out the **extra life cycle worksheet** with the names of each life cycle stage.